

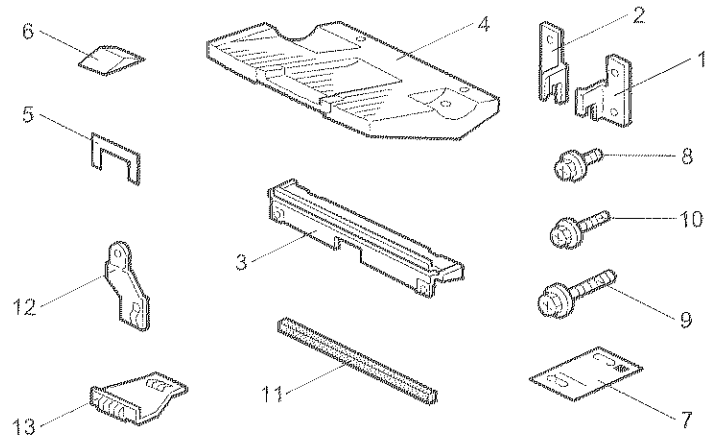
3,000-SHEET FINISHER (Machine Code: A697)

INSTALLATION PROCEDURE For Machine Code: A229/A232/A284 Copiers and G035 Printer

ACCESSORY CHECK

Check the accessories in the box according to the following list:

No.	Description	Q'ty
1	Front Joint Bracket	1
2	Rear Joint Bracket	1
3	Entrance Guide Plate	1
4	Shift Tray	1
5	Exit Guide Mylar for A229 copier	1
6	Shift Tray Guide for A232/A284 copiers and G035 printer	1
7	Staple Position Decal	1
8	Tapping Screw - M3 x 6	2
9	Tapping Screw - M4 x 14	4
10	Tapping Screw - M3 x 8	4
11	Cushion	1
12	Upper Grounding Plate for A232 and A284 copiers	1
13	Lower Grounding Plate	1
14	Installation Procedure (English)	1
15	New Equipment Condition Report (Multi-language)	1



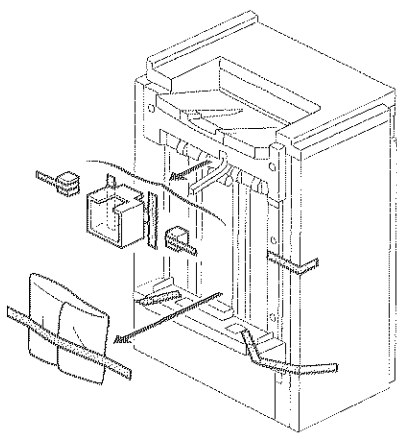
A6971505.WMF

NOTE: THE FINISHER MUST BE INSTALLED BY A CUSTOMER SERVICE REPRESENTATIVE WHO HAS COMPLETED THE TRAINING COURSES ON THE BASE MACHINE AND THE FINISHER.

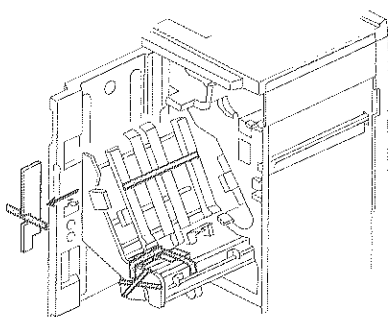
A6978610E
Printed in Japan

1

INSTALLATION PROCEDURE

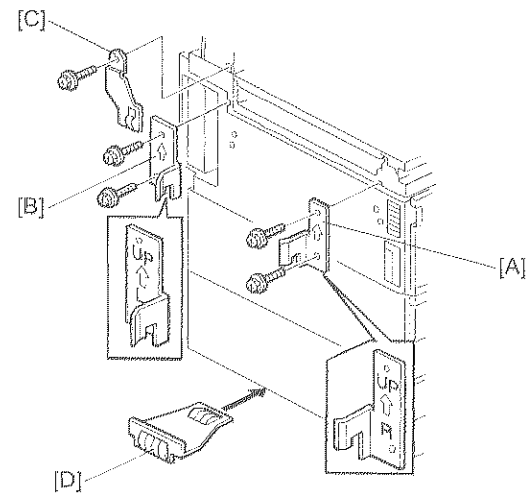


A6971506.WMF



A6971507.WMF

- A232/A284 copiers and G035 printer -



A6971508.WMF

- A232/A284 copiers and G035 printer -

- Install the front joint bracket [A] and rear joint bracket [B] (2 screws each).
 - A232/A284 copiers only:** Attach the upper grounding plate [C] (1 screw).
 - Peel off the backing of the double sided tape that is attached to the lower grounding plate [D].
 - Attach one lower grounding plate to the center position of the paper tray unit as shown.
- Go to step 7.

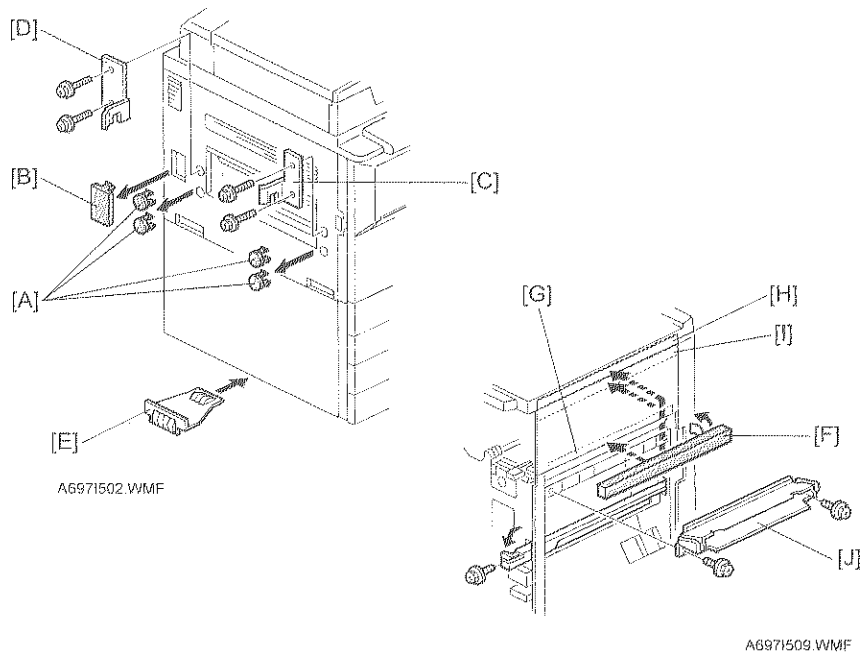
CAUTION

Unplug the main machine power cord before starting the following procedure.

- NOTE:** 1) To install this finisher to the A232 or A284 copier, the Bridge Unit (A688) and Paper Tray Unit (A682) must be installed.
2) To install this finisher to the G035 printer, the Bridge Unit (A688) and Paper Tray Unit (G520) must be installed.

- Unpack the finisher and remove the tapes.

- A229 copier -

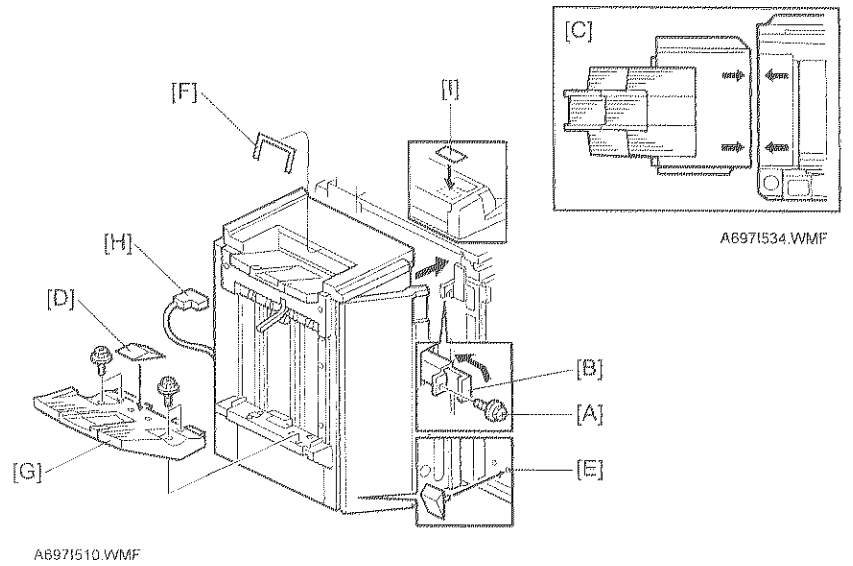


- A229 copier -

2. Remove the four plastic caps [A] from the copier's left cover.
3. Remove the connector cover [B].
4. Install the front joint bracket [C] and rear joint bracket [D] (2 screws - M4 x 14 each).
5. Peel off the backing of the double sided tape that is attached to the lower grounding plate [E].
6. Attach the lower grounding plate to the bottom edge of the paper tray unit as shown.

- All machines -

7. The position of the cushion [F] varies depending on which base copier or peripherals that are installed. Attach the cushion on the plate as follows:
 - Position [G] for A232/A284 copiers and G035 printer.
 - Position [H] for A229 copier.
 - Position [I] when the optional mailbox (G909) is installed.
8. Install the entrance guide plate [J] (2 screws).



9. Open the front door of the finisher, and remove the screw [A] which secures the locking lever [B]. Then pull the locking lever.
10. Align the finisher on the joint brackets, and lock it in place by pushing the locking lever.

NOTE: Before securing the locking lever, make sure that the top edges of the finisher and the copier are parallel from front to rear as shown [C].
11. Secure the locking lever (1 screw) and close the front door.
12. **A232/A284 copiers and G035 printer only:**
Install the sub shift tray [D] on the shift tray. If the customer does not wish to install it on the shift tray, store it at location [E].
NOTE: The sub shift tray is required to assist in proper paper staking.
12. **A229 copier only:**
Install the exit guide mylar [F] to the anti-static brush bracket located above the upper tray exit roller as shown.
13. Install the shift tray [G] (4 screws).
14. Connect the finisher cable [H] to the main machine.
15. **A232/A284/A229 copiers only:**
Attach the staple position decal [I] to the ARDF as shown.
16. Turn on the main power switch and check the finisher operation.